

Min. 20 GA 3 5/8" CFS Stud Framing @ Max 24" O.C.  
Greater Stud Gauges or Lesser Stud Spacing Are Also Approved

(2) Layers 1/2" Innovation MgO Wall Panel Installed Vertically

Min. 4" 20 GA Flat Strapping Plate Blocking at First Layer Horizontal Seams as Req.

(2) Layers 1/2" Innovation MgO Wall Panel Installed Vertically

Min. R-13 Fiberglass or Mineral Wool Cavity Insulation Friction Fit Full Cavity Depth

2-Hour Symmetrical Wall from Either Side  
100% Load Bearing; Steel Framed  
Design Number: MOS 1610-06  
Uses: Demising Walls, Shaft Walls, Load Bearing Exterior or Interior Walls



[www.usmgo.co](http://www.usmgo.co)

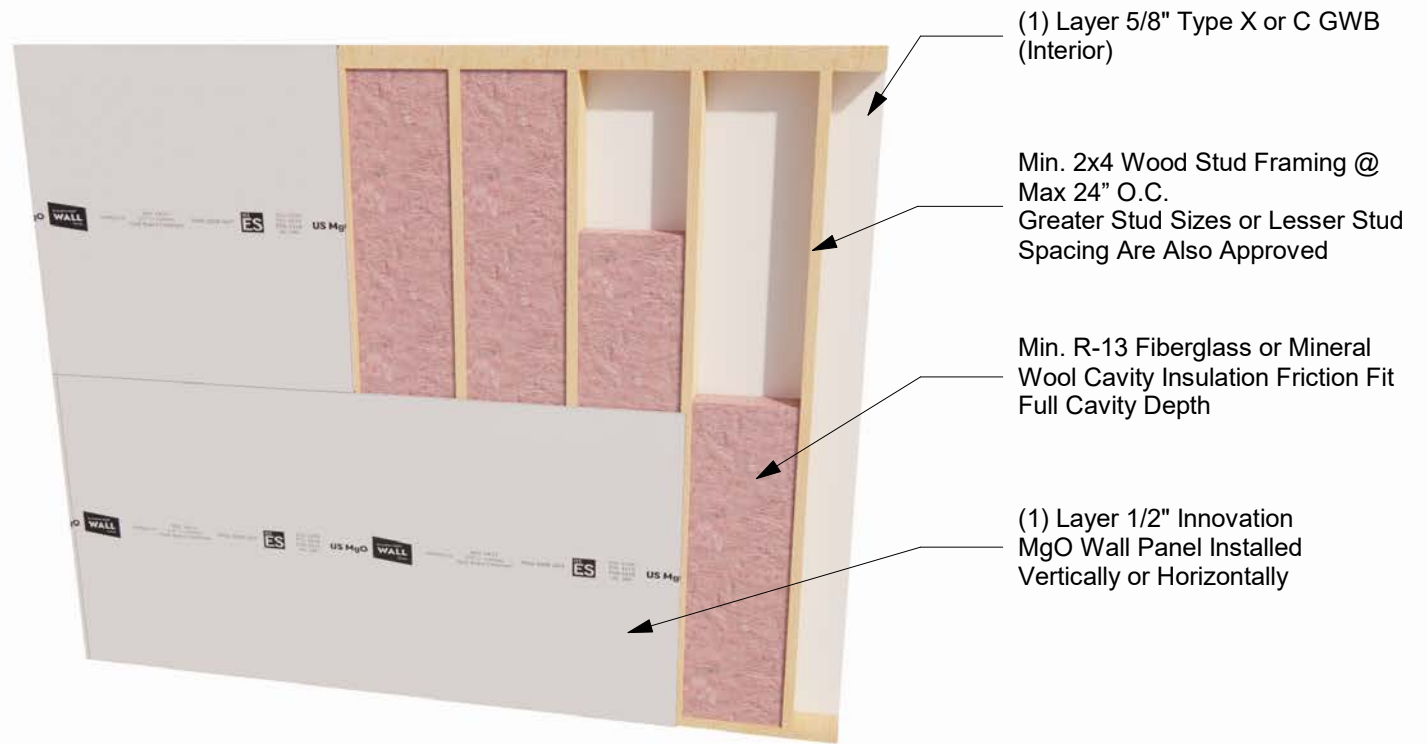
Innovation MgO 1/2" Wall Panel

2 HR Metal Stud Elevator Shaft Assembly

Design Number: MOS-1610-06

Fire Rating: 2 HR

Should these be used for rated assemblies contact US MgO technical support or review the fire rated handbook provided by US MgO



1-Hour Symmetrical Wall from Either Side  
 100% Load Bearing Wood Framed  
 Design Number: MOS 1610-01  
 Uses: Demising Walls, Shaft Walls, Load Bearing Exterior or Interior Walls

Should these be used for rated assemblies contact US MgO technical support or review the fire rated handbook provided by US MgO



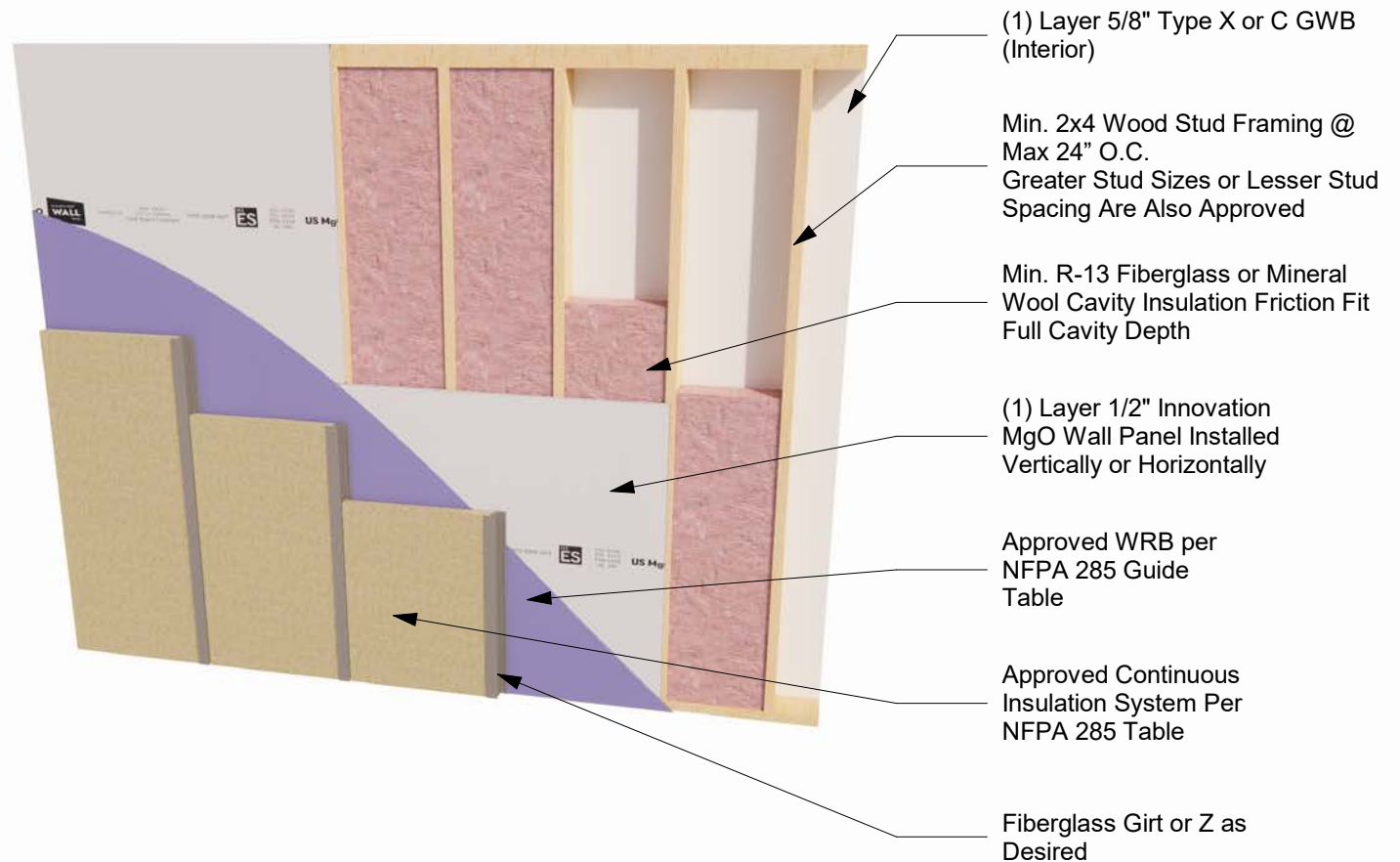
[www.usmgo.co](http://www.usmgo.co)

### Innovation MgO 1/2" Wall Panel

1 HR Wood Stud Assembly

Design Number: MOS-1610-01

Fire Rating: 1 HR



Type III or V Construction Approved NFPA 285 Assembly

Uses: Multifamily or Residential Exterior Wall Type with CI

Should these be used for rated assemblies contact US MgO technical support or review the fire rated handbook provided by US MgO



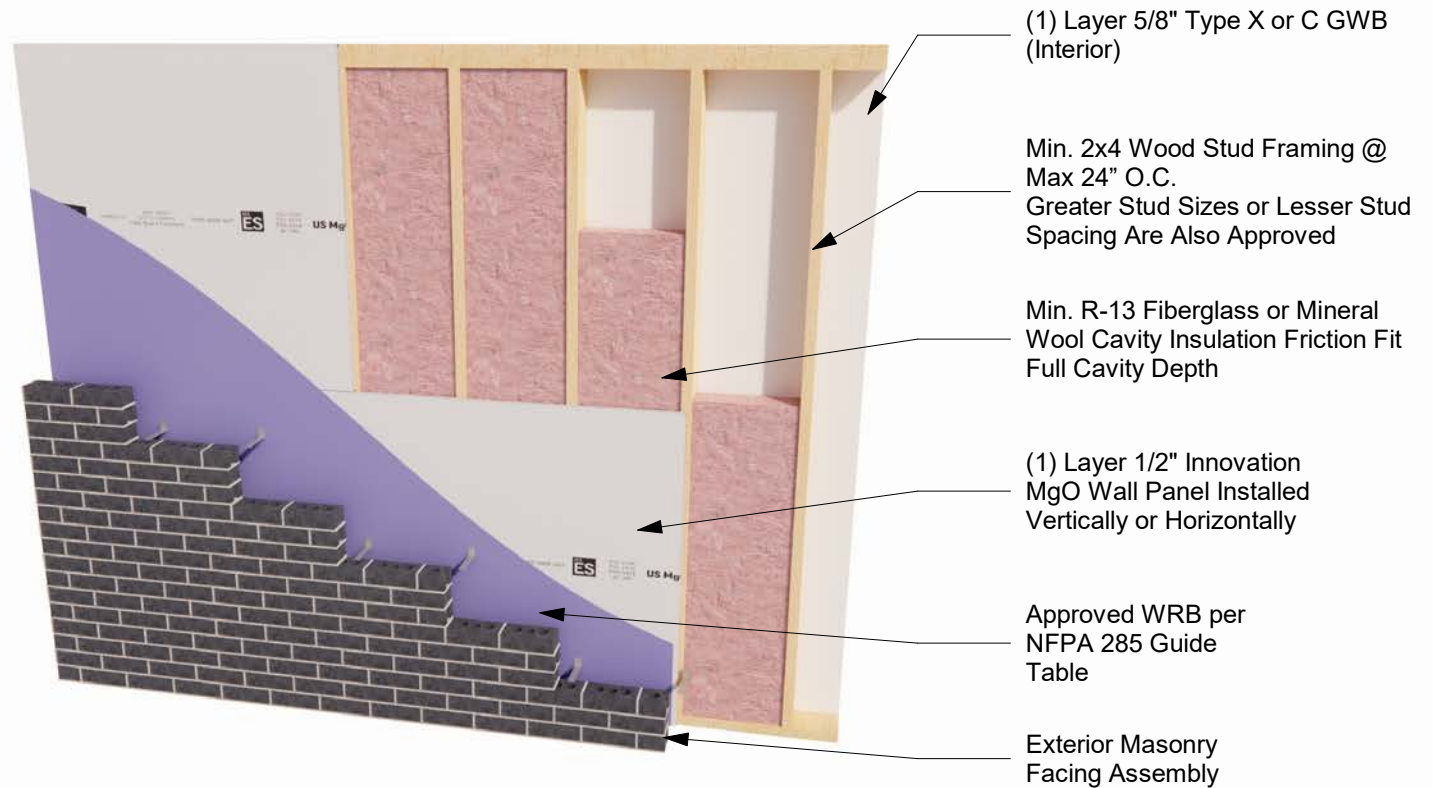
[www.usmgo.co](http://www.usmgo.co)

### Innovation MgO 1/2" Wall Panel

1 HR Wood Stud Assembly with Continuous CI

Design Number: MOS-1610-01

Fire Rating: 1 HR



Type III or V Construction Approved NFPA 285 Assembly

Uses: Multifamily or Residential Exterior Wall Type with Masonry Facing

Should these be used for rated assemblies contact US MgO technical support or review the fire rated handbook provided by US MgO



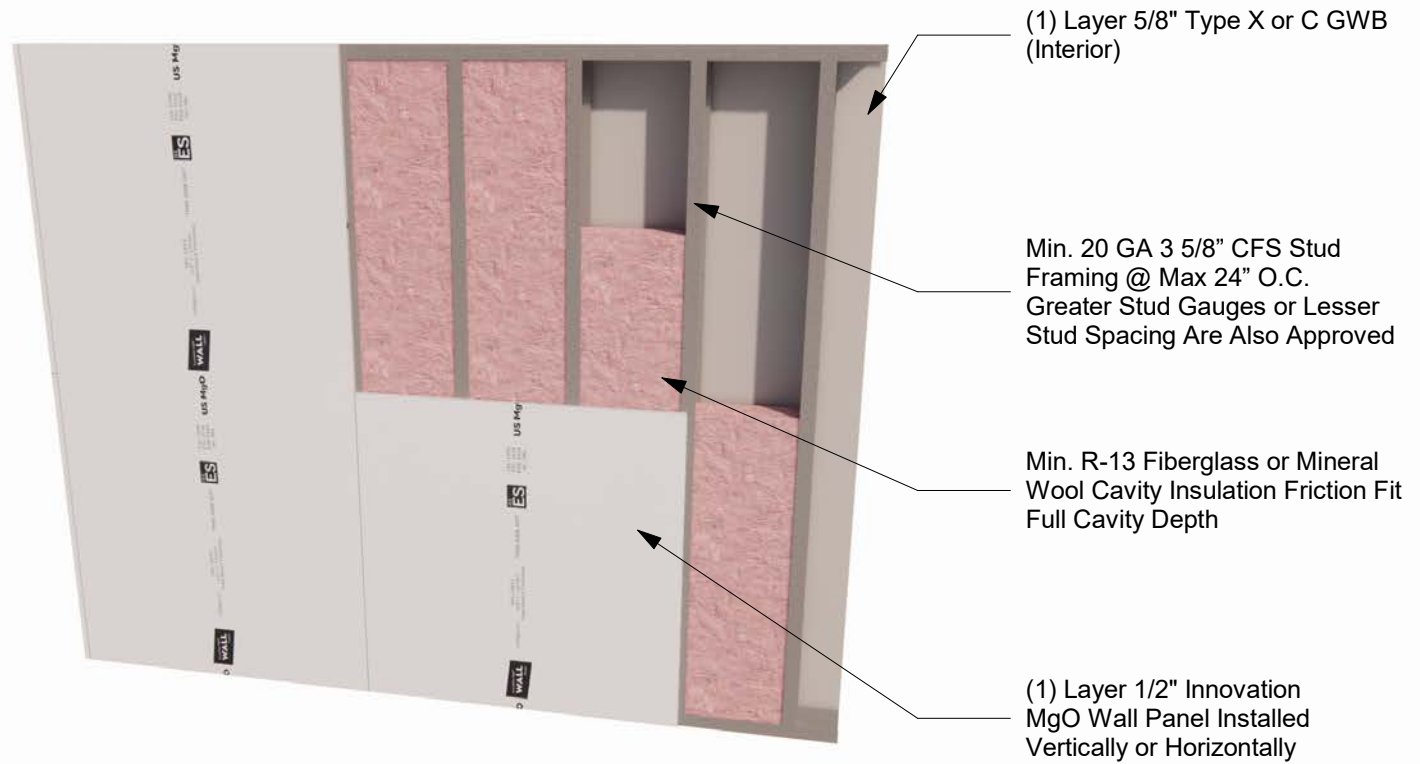
[www.usmgo.co](http://www.usmgo.co)

### Innovation MgO 1/2" Wall Panel

1 HR Wood Stud Assembly

Design Number: MOS-1610-01

Fire Rating: 1 HR



1-Hour Symmetrical Wall from Either Side  
 100% Load Bearing, Steel Frame  
 Design Number: MOS 1610-02  
 Uses: Demising Walls, Shaft Walls, Load Bearing Exterior or Interior Walls



[www.usmgo.co](http://www.usmgo.co)

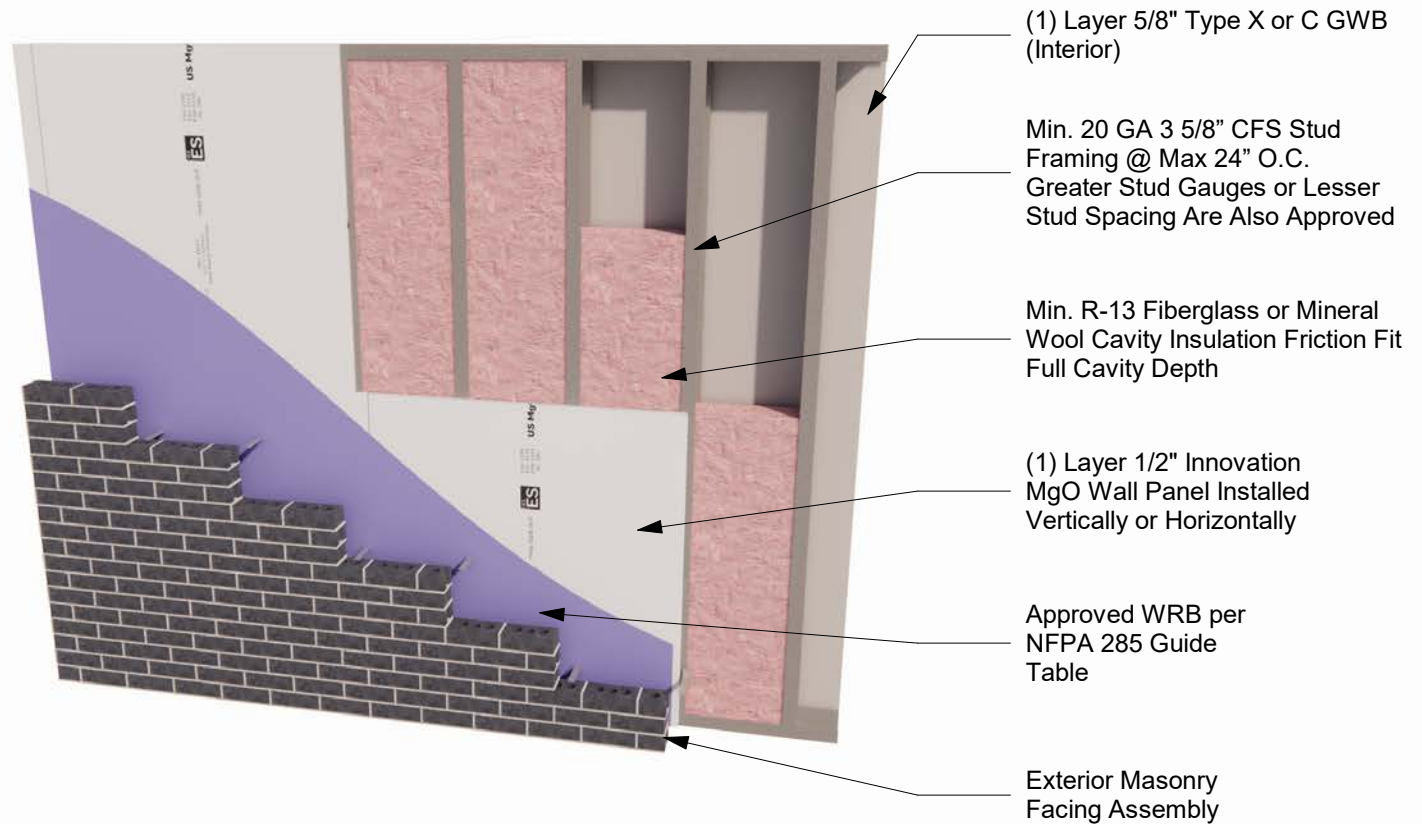
### Innovation MgO 1/2" Wall Panel

1 HR CFS Stud Assembly

Design Number: MOS-1610-02

Fire Rating: 1 HR

Should these be used for rated assemblies contact US MgO technical support or review the fire rated handbook provided by US MgO



1-Hour Symmetrical Wall from Either Side  
 100% Load Bearing, Steel Frame  
 Design Number: MOS 1610-02  
 Uses: Demising Walls, Shaft Walls, Load Bearing Exterior or Interior Walls



[www.usmgo.co](http://www.usmgo.co)

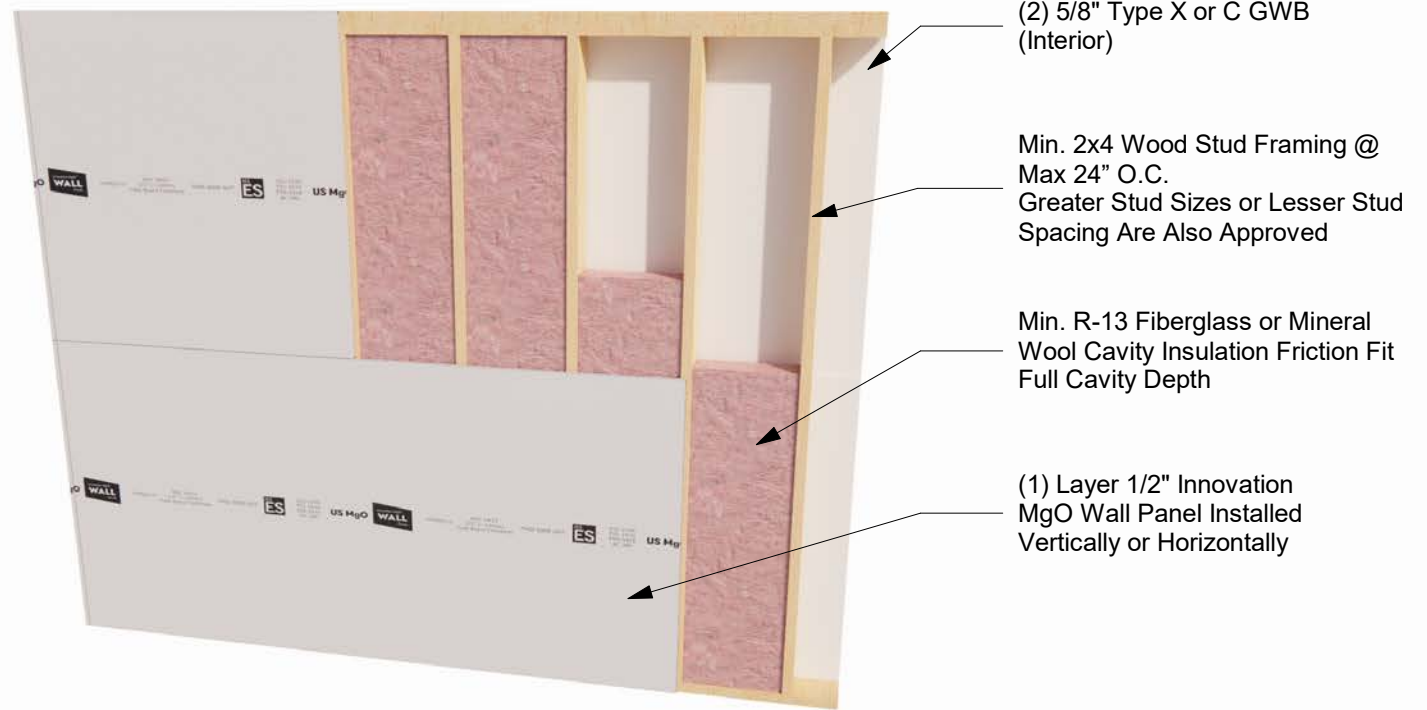
### Innovation MgO 1/2" Wall Panel

1 HR CFS Stud Assembly

Design Number: MOS-1610-02

Fire Rating: 1 HR

Should these be used for rated assemblies contact US MgO technical support or review the fire rated handbook provided by US MgO



2-Hour / 1-Hour Asymmetrical Wall Assembly  
 100% Load Bearing, Wood Frame  
 Design Number: MOS 1610-03  
 Uses: Demising Walls, Shaft Walls, Load Bearing Exterior or Interior  
 Walls With Distance Rating Reduction Per Chapter 7 of IBC

Should these be used for rated assemblies contact US MgO technical support or review the fire rated handbook provided by US MgO



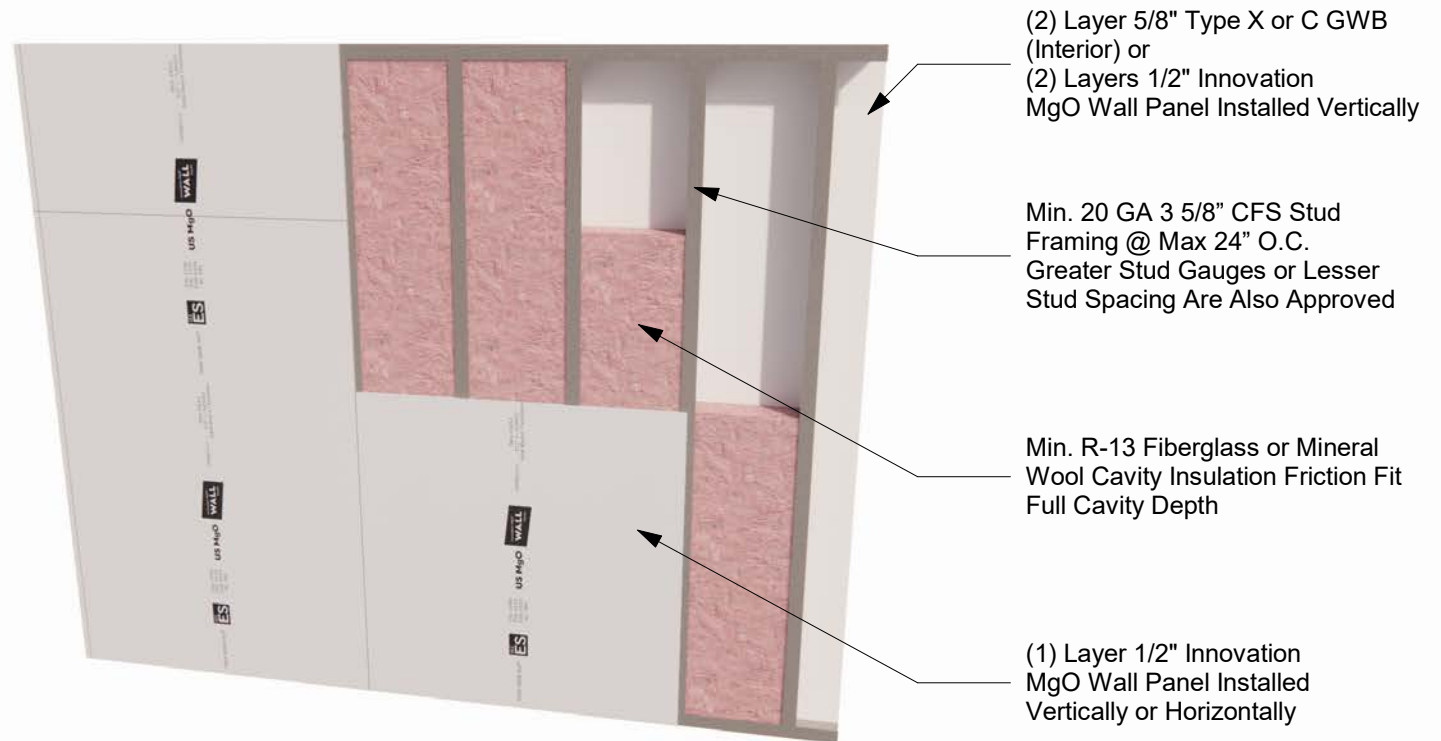
[www.usmgo.co](http://www.usmgo.co)

### Innovation MgO 1/2" Wall Panel

2 HR/1 HR Asymmetrical Wood Stud Assembly

Design Number: MOS-1610-03

Fire Rating: 1 HR Exterior Face; 2 HR Interior Face



2-Hour / 1-Hour Asymmetrical Wall Assembly  
 100% Load Bearing, Steel Frame  
 Design Number: MOS 1610-04  
 Uses: Demising Walls, Shaft Walls, Load Bearing Exterior or Interior Walls with Distance Rating Reduction Per Chapter 7 of IBC

Should these be used for rated assemblies contact US MgO technical support or review the fire rated handbook provided by US MgO



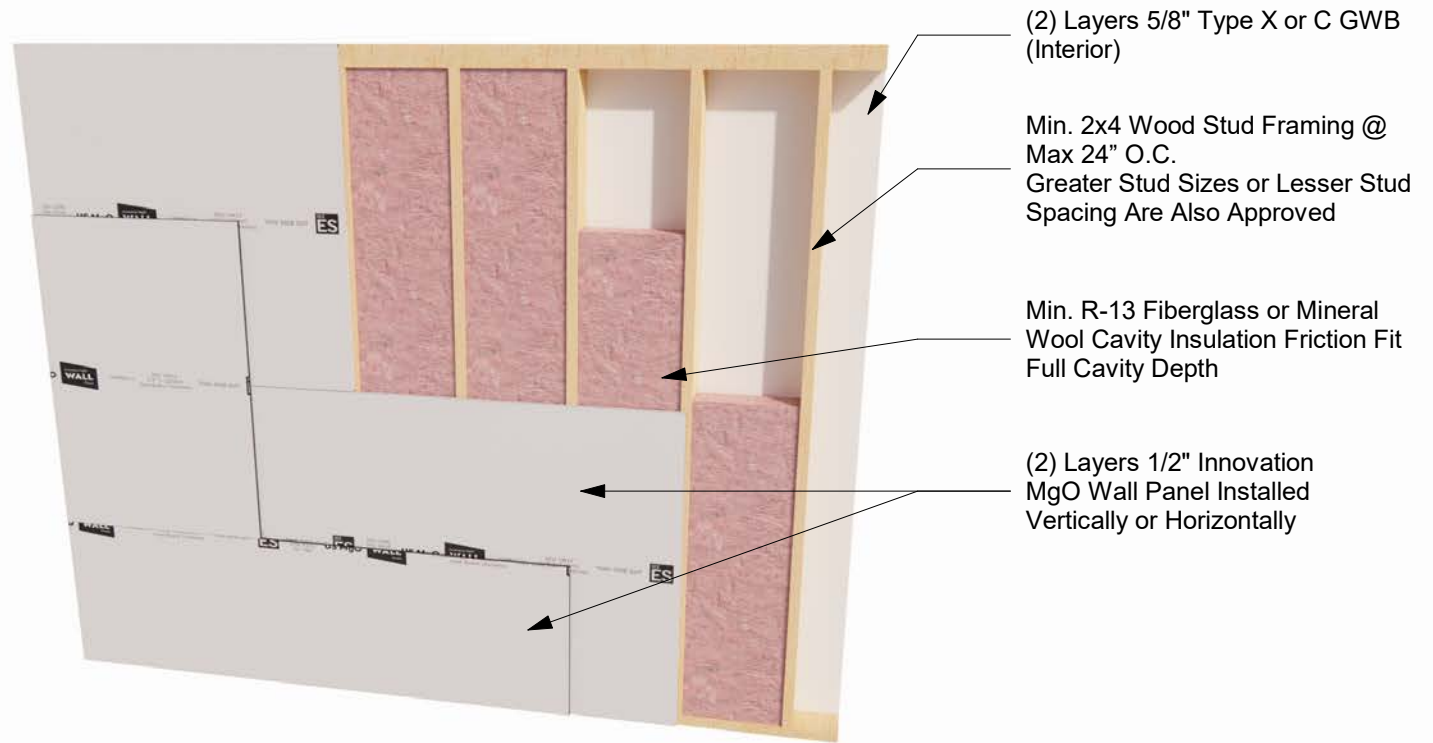
[www.usmgo.co](http://www.usmgo.co)

### Innovation MgO 1/2" Wall Panel

2 HR/1 HR Asymmetrical CFS Stud Assembly

Design Number: MOS-1610-04

Fire Rating: 1 HR Exterior Face; 2 HR Interior Face



(2) Layers 5/8" Type X or C GWB (Interior)

Min. 2x4 Wood Stud Framing @ Max 24" O.C.  
Greater Stud Sizes or Lesser Stud Spacing Are Also Approved

Min. R-13 Fiberglass or Mineral Wool Cavity Insulation Friction Fit Full Cavity Depth

(2) Layers 1/2" Innovation MgO Wall Panel Installed Vertically or Horizontally

2-Hour Symmetrical Wall Assembly  
100% Load Bearing, Wood Frame  
Design Number: MOS 1610-05  
Uses: Demising Walls, Shaft Walls, Load Bearing Exterior or Interior Walls



[www.usmgo.co](http://www.usmgo.co)

Innovation MgO 1/2" Wall Panel

2 HR Symmetrical Wood Stud Assembly

Design Number: MOS-1610-05

Fire Rating: 2 HR

Should these be used for rated assemblies contact US MgO technical support or review the fire rated handbook provided by US MgO



(2) Layer 5/8" Type X or C GWB  
(Interior) or  
(2) Layers 1/2" Innovation  
MgO Wall Panel Installed  
Vertically or Horizontally

Min. 20 GA 3 5/8" CFS Stud  
Framing @ Max 24" O.C.  
Greater Stud Gauges or Lesser  
Stud Spacing Are Also Approved

Min. R-13 Fiberglass or Mineral  
Wool Cavity Insulation Friction Fit  
Full Cavity Depth

(2) Layers 1/2" Innovation  
MgO Wall Panel Installed  
Vertically or Horizontally

2-Hour Symmetrical Wall Assembly  
100% Load Bearing, Steel Frame  
Design Number: MOS 1610-06  
Uses: Demising Walls, Shaft Walls, Load Bearing Exterior or Interior  
Walls



[www.usmgo.co](http://www.usmgo.co)

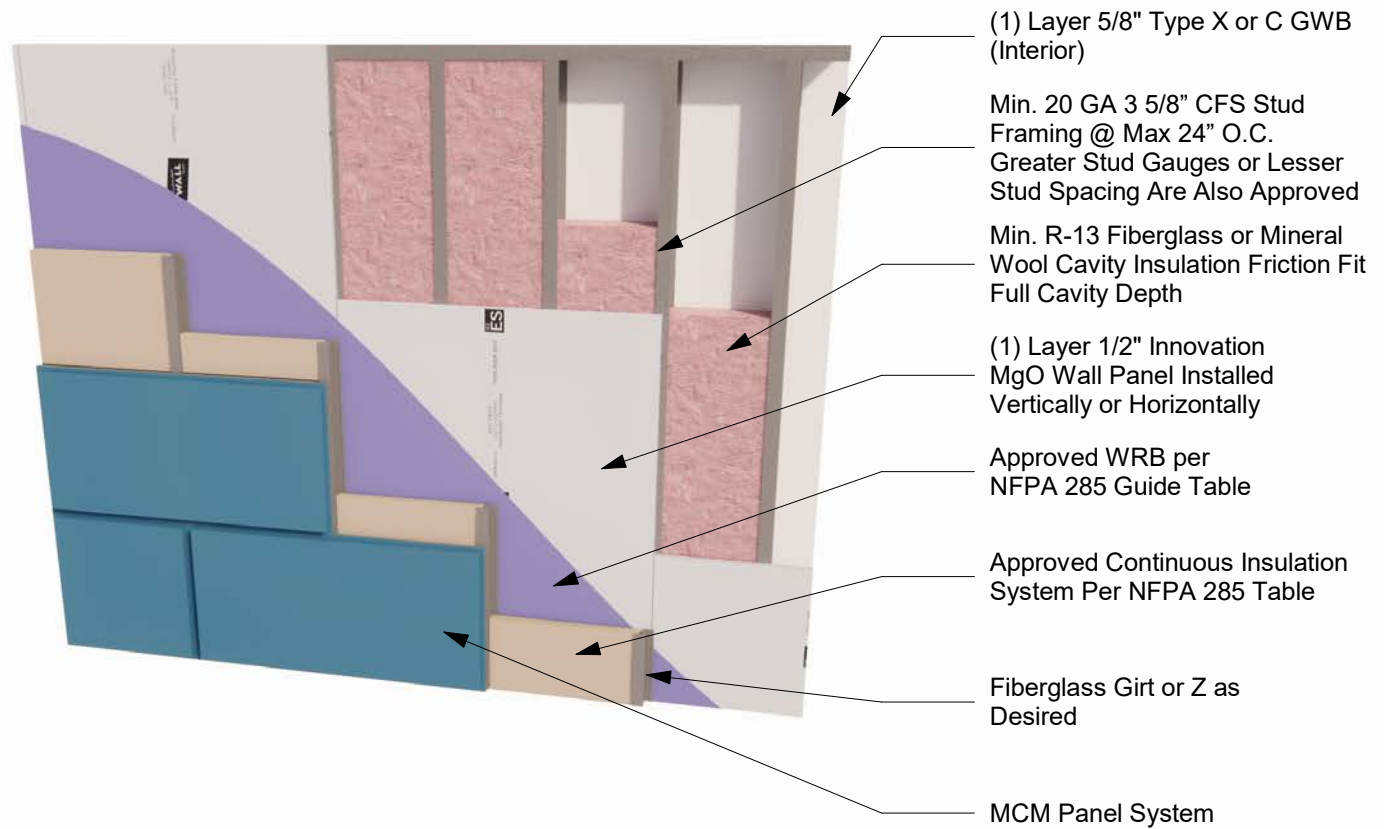
### Innovation MgO 1/2" Wall Panel

2 HR CFS Stud Assembly

Design Number: MOS-1610-06

Fire Rating: 2 HR

Should these be used for rated assemblies contact US MgO technical support or review the fire rated handbook provided by US MgO



Type I, II, Or III Construction Approved NFPA 285 Assembly

Uses: Commercial Exterior Wall Type with CI

Should these be used for rated assemblies contact US MgO technical support or review the fire rated handbook provided by US MgO



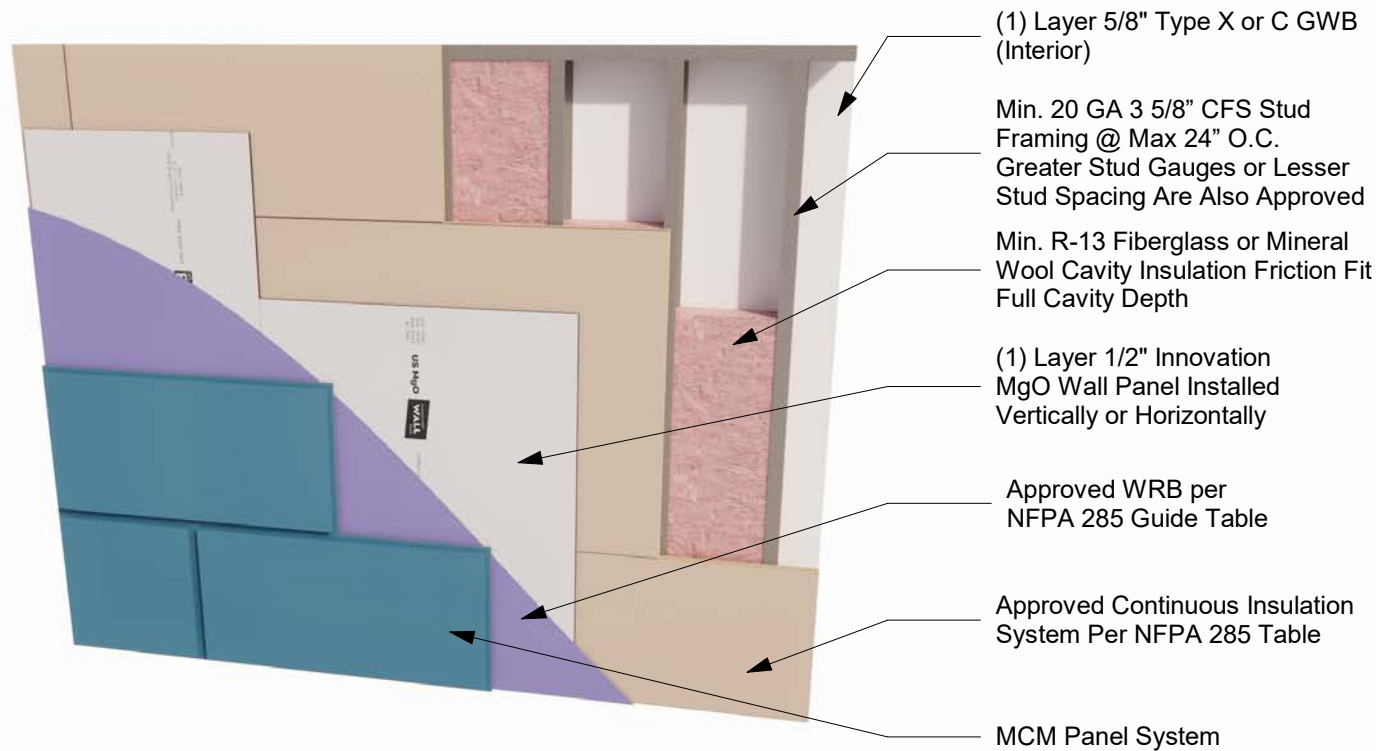
[www.usmgo.co](http://www.usmgo.co)

### Innovation MgO 1/2" Wall Panel

1 HR CFS Stud Assembly w/ MCM Panel System

Design Number: MOS-1610-TBD

Fire Rating: Approved Assembly; Contact Mfr for Approved Wall And Table Matrix



Type I, II, Or III Construction Approved NFPA 285 Assembly

Uses: Commercial Exterior Wall Type with CI Behind MgO

Should these be used for rated assemblies contact US MgO technical support or review the fire rated handbook provided by US MgO



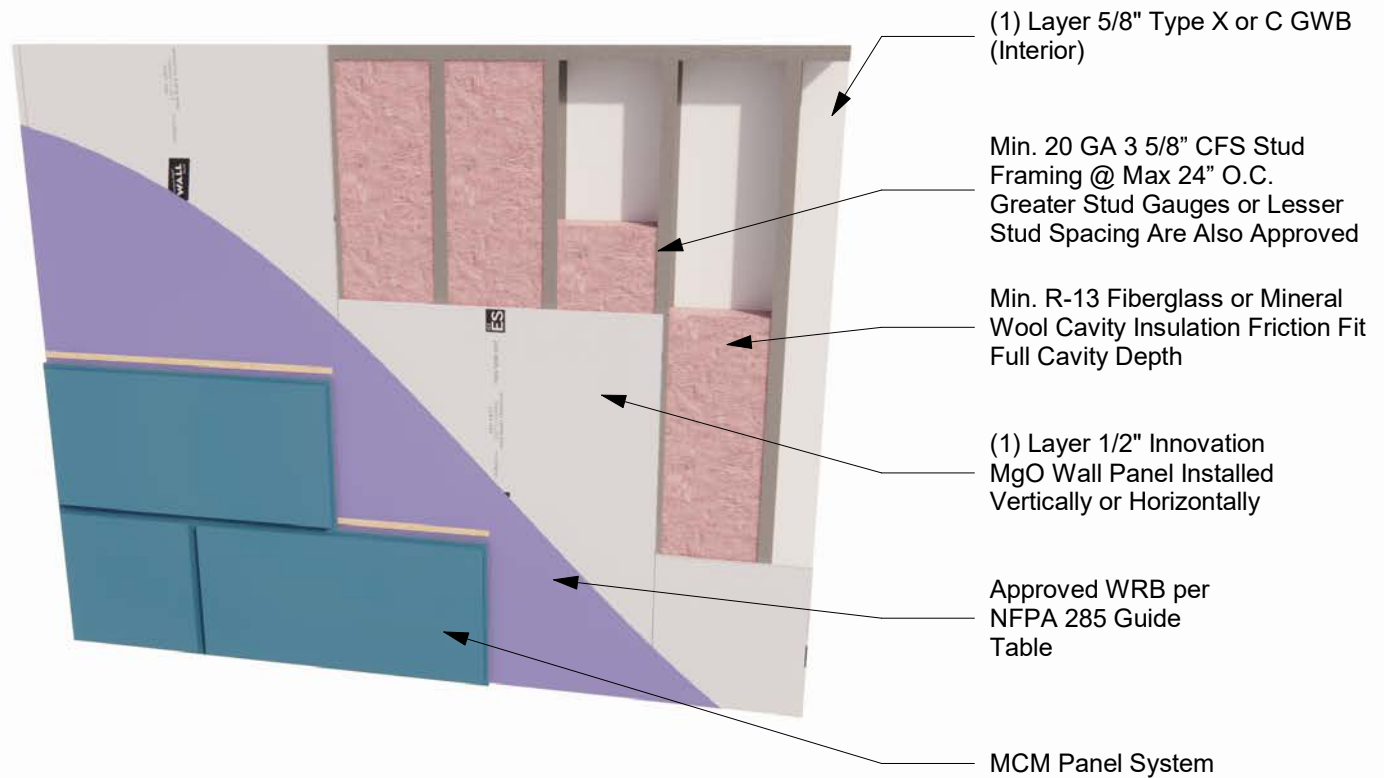
[www.usmgo.co](http://www.usmgo.co)

### Innovation MgO 1/2" Wall Panel

1 HR CFS Stud Assembly w/ MCM Panel System

Design Number: MOS-1610-TBD

Fire Rating: Approved Assembly; Contact Mfr for Approved Wall And Table Matrix



Type I, II, Or III Construction Approved NFPA 285 Assembly

Uses: Commercial Exterior Wall Type without CI

Should these be used for rated assemblies contact US MgO technical support or review the fire rated handbook provided by US MgO



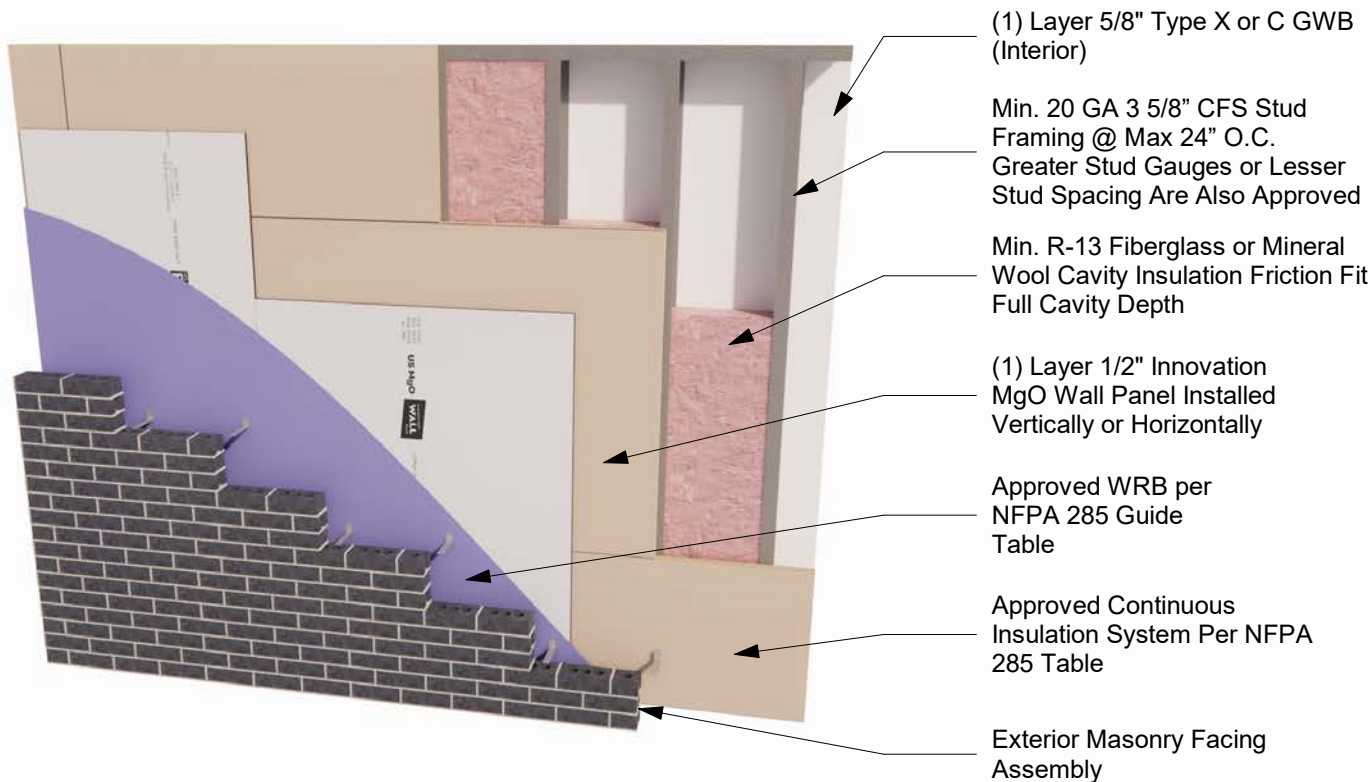
[www.usmgo.co](http://www.usmgo.co)

### Innovation MgO 1/2" Wall Panel

1 HR CFS Stud Assembly w/ MCM Panel System

Design Number: MOS-1610-TBD

Fire Rating: 1 HR



Type I, II, or III Construction Approved NFPA 285 Assembly - Brick

Uses: Commercial Exterior Wall Type with CI Behind MgO

Should these be used for rated assemblies contact US MgO technical support or review the fire rated handbook provided by US MgO



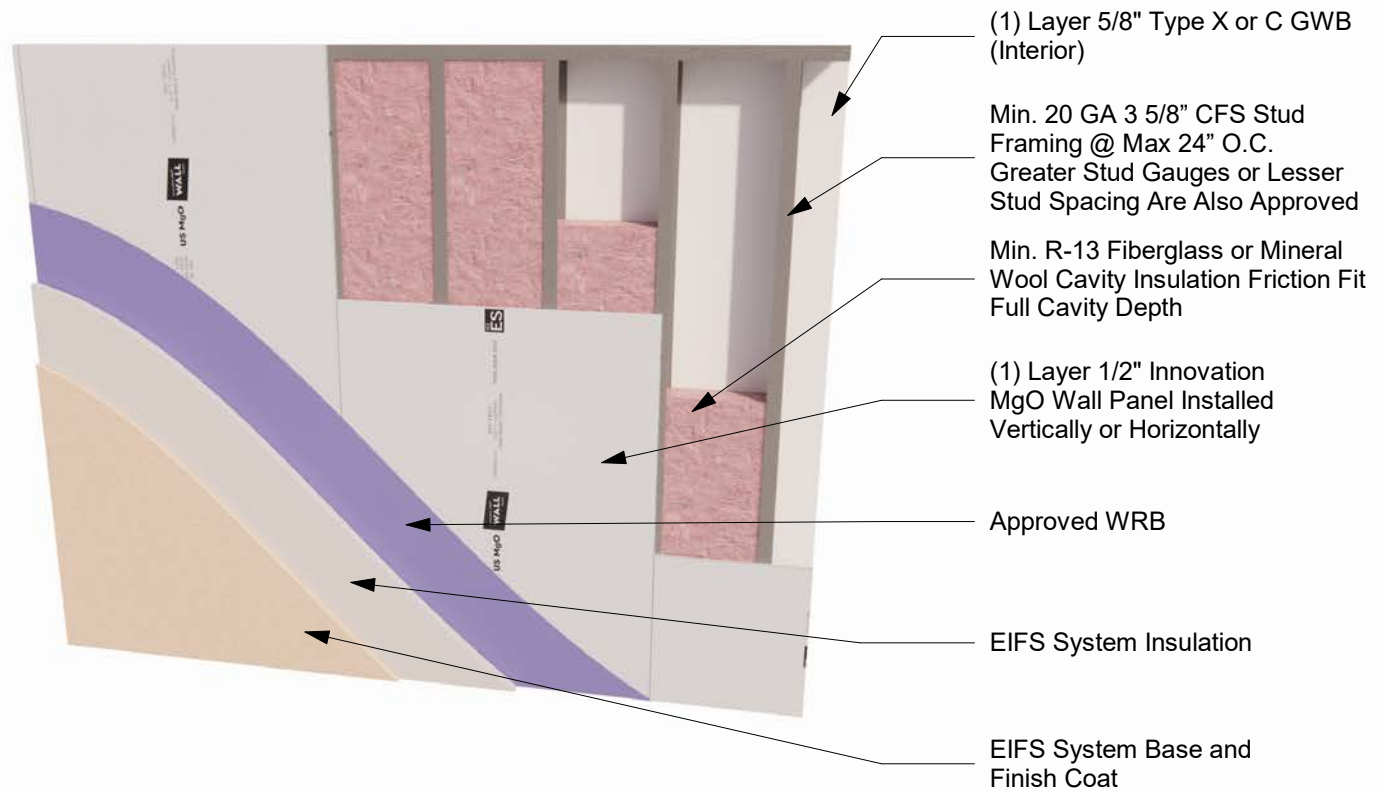
[www.usmgo.co](http://www.usmgo.co)

### Innovation MgO 1/2" Wall Panel

CFS Stud Assembly w/ CI

Design Number: MOS-1610-TBD

Fire Rating: Approved Assembly; Contact Mfr for Approved Wall And Table Matrix



Type I, II, or III Construction Approved NFPA 285 Assembly - EIFS

Uses: Commercial Exterior Wall Type with CI Behind MgO

Should these be used for rated assemblies contact US MgO technical support or review the fire rated handbook provided by US MgO



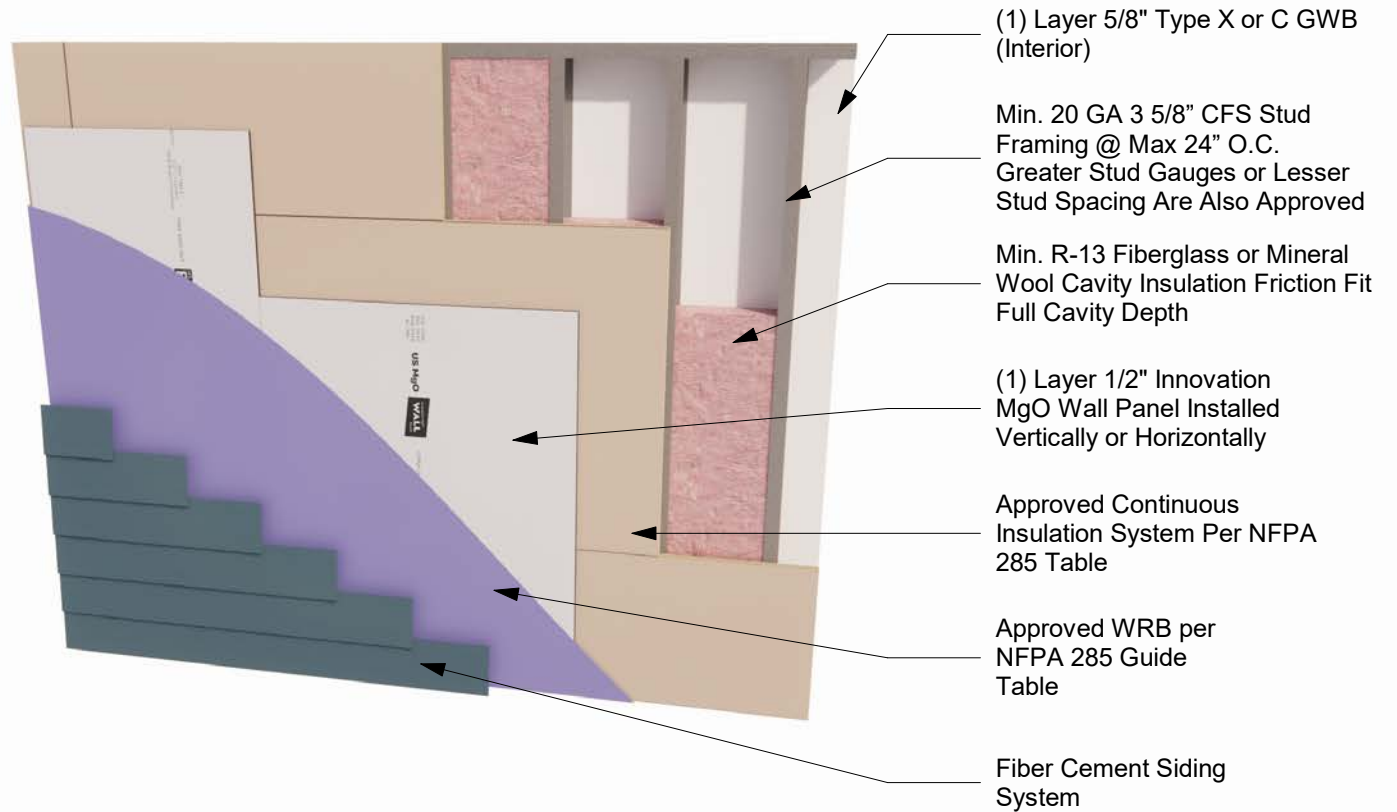
[www.usmgo.co](http://www.usmgo.co)

### Innovation MgO 1/2" Wall Panel

1 HR CFS Stud Assembly w/ EIFS

Design Number: MOS-1610-TBD

Fire Rating: 1 HR



Type I, II, or III Construction Approved NFPA 285 Assembly - Fiber Cement

Uses: Commercial Exterior Wall Type with CI Behind MgO

Should these be used for rated assemblies contact US MgO technical support or review the fire rated handbook provided by US MgO



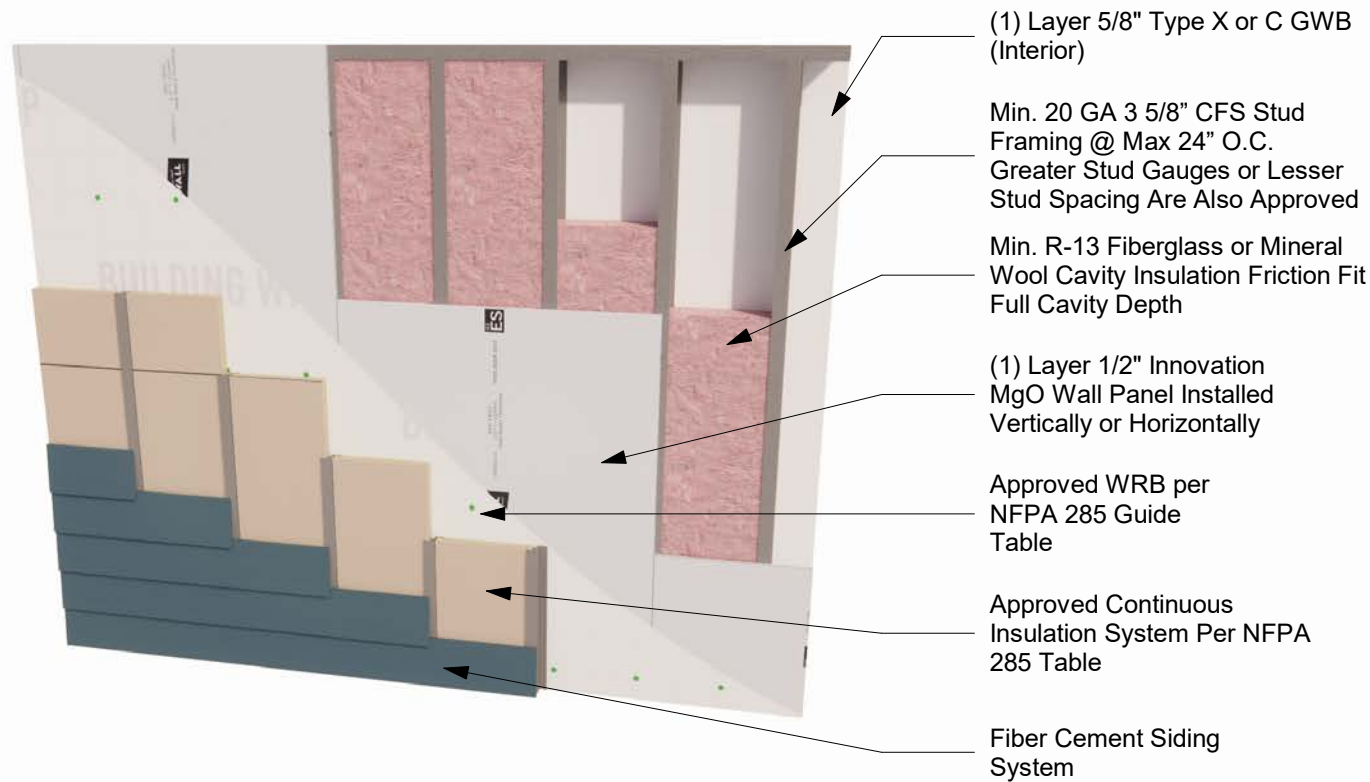
[www.usmgo.co](http://www.usmgo.co)

### Innovation MgO 1/2" Wall Panel

CFS Stud Assembly w/ CI and Fiber Cement Siding

Design Number: MOS-1610-TBD

Fire Rating: Approved Assembly; Contact Mfr for Approved Wall And Table Matrix



Type I, II, or III Construction Approved NFPA 285 Assembly - Fiber Cement

Uses: Commercial Exterior Wall Type with CI

Should these be used for rated assemblies contact US MgO technical support or review the fire rated handbook provided by US MgO



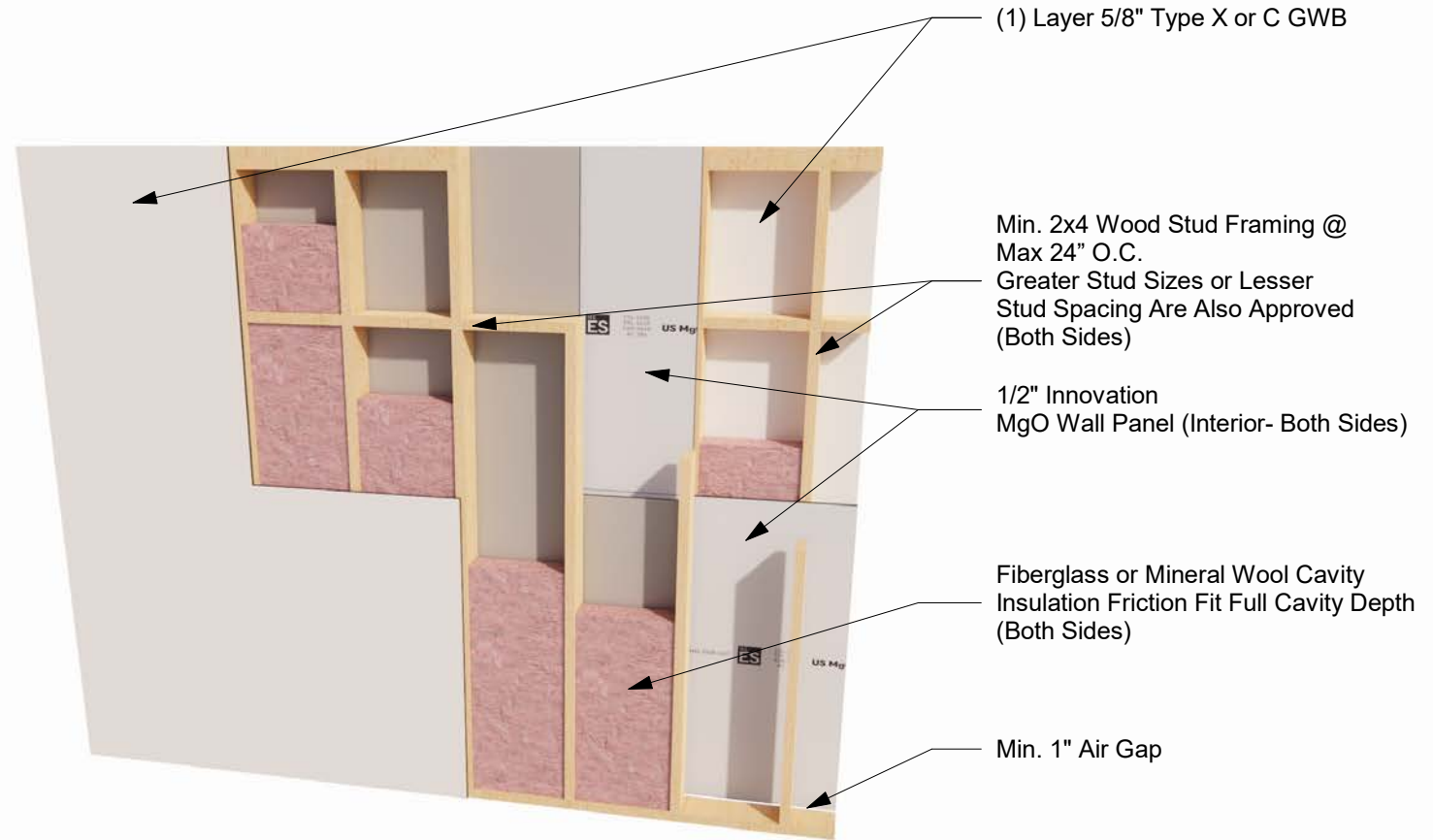
[www.usmgo.co](http://www.usmgo.co)

### Innovation MgO 1/2" Wall Panel

1 HR CFS Stud Assembly w/ CI and Fiber Cement Siding

Design Number: MOS-1610-TBD

Fire Rating: 1 HR



2-Hour Symmetrical Wall Assembly  
100% Load Bearing, Wood Frame  
Design Number: MOS 1610-TBD

Uses: Demising Walls, Unit Separation Walls Between Dwelling Units

Should these be used for rated assemblies contact US MgO technical support or review the fire rated handbook provided by US MgO



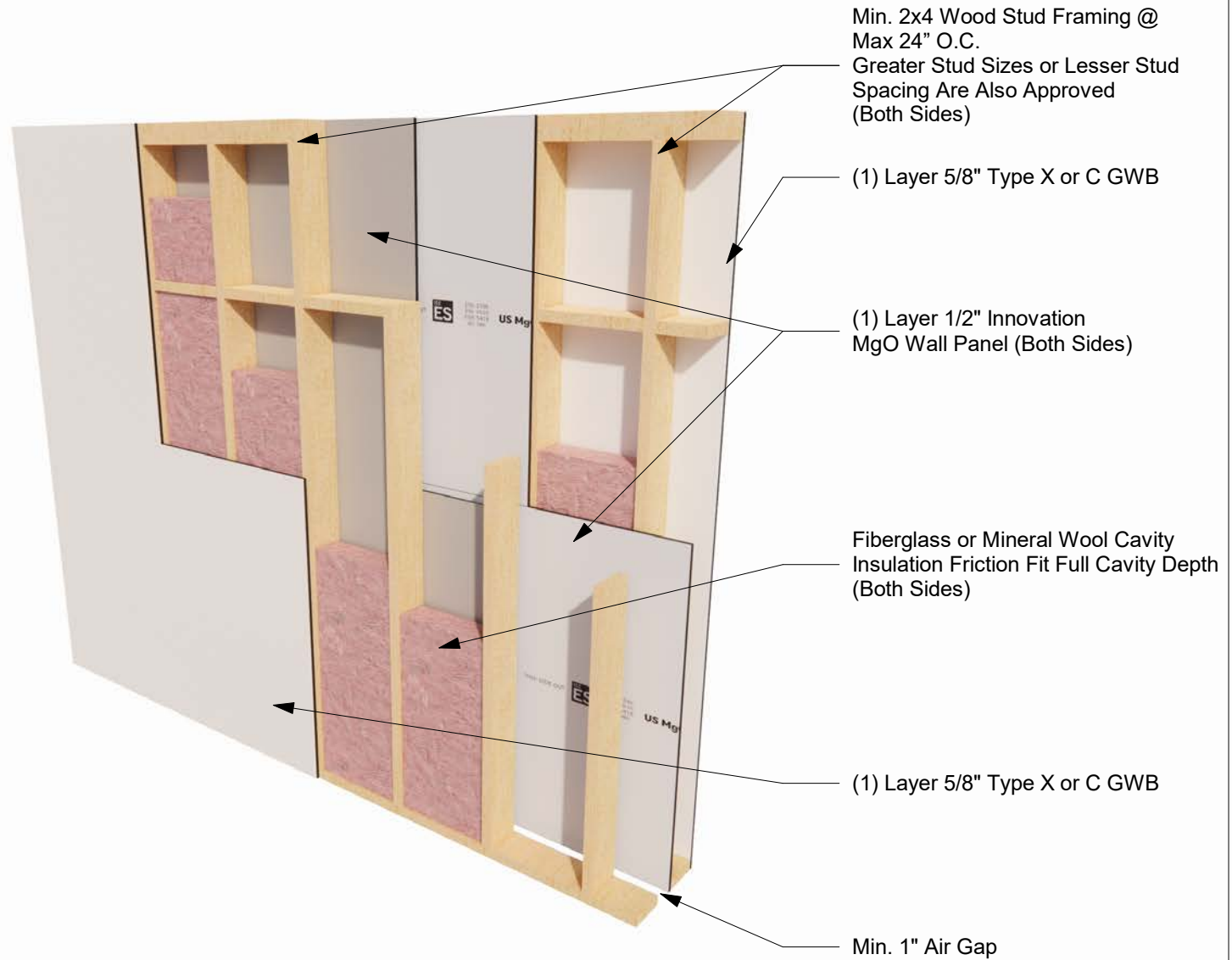
[www.usmgo.co](http://www.usmgo.co)

### Innovation MgO 1/2" Wall Panel

2 Hr Wood Stud Fire Wall

Design Number: MOS-1610-TBD

Fire Rating: 2 HR



2-Hour Symmetrical Wall Assembly  
100% Load Bearing, Wood Frame  
Design Number: MOS 1610-TBD

Uses: Demising Walls, Unit Separation Walls Between Dwelling Units

Should these be used for rated assemblies contact US MgO technical support or review the fire rated handbook provided by US MgO



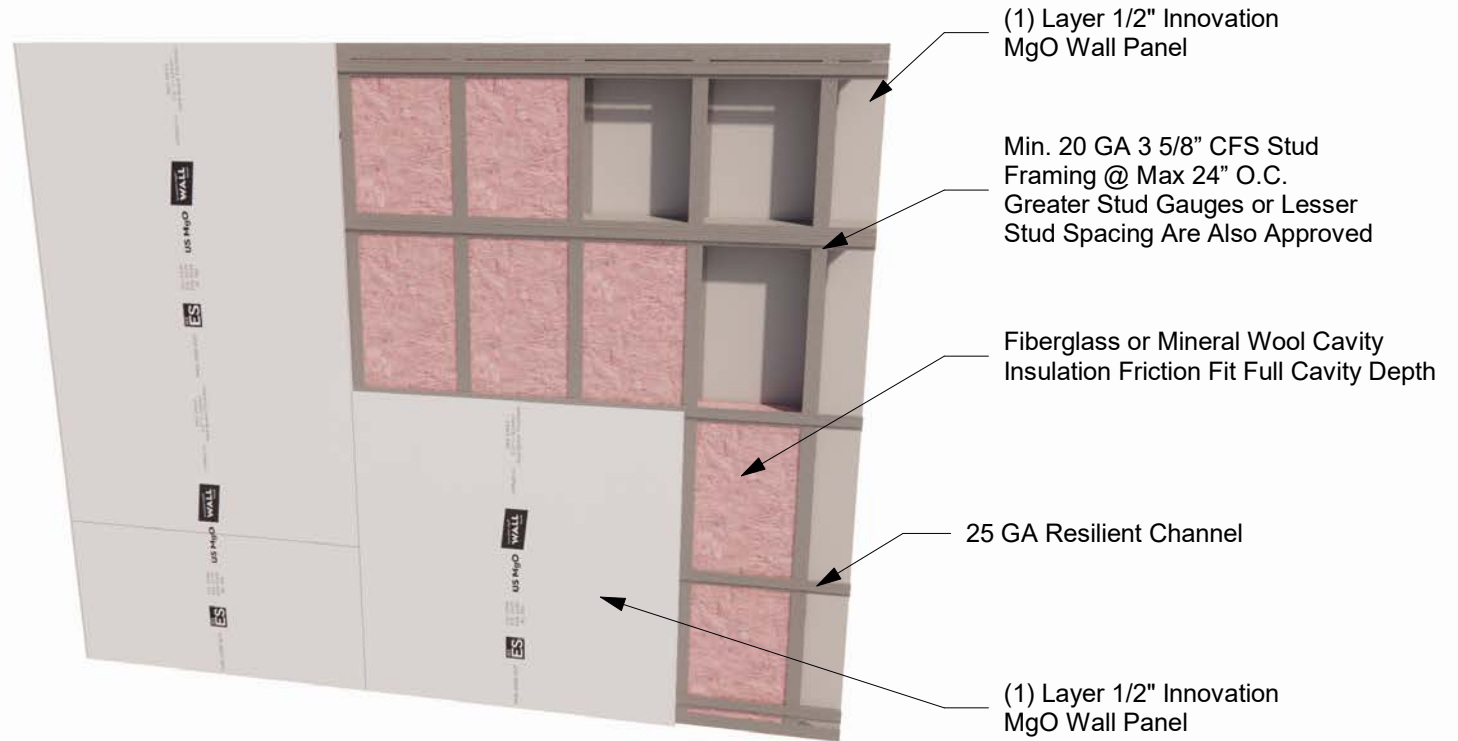
[www.usmgo.co](http://www.usmgo.co)

### Innovation MgO 1/2" Wall Panel

2 Hr Wood Stud Fire Wall

Design Number: MOS-1610-TBD

Fire Rating: 2 HR



1-HOUR SYMMETRICAL WALL ASSEMBLY  
 100% LOAD BEARING, STEEL FRAME  
 DESIGN NUMBER: TBD

USES: DEMISING WALLS, SHAFT WALLS, LOAD BEARING  
 INTERIOR WALLS

Should these be used for rated assemblies contact US MgO technical  
 support or review the fire rated handbook provided by US MgO



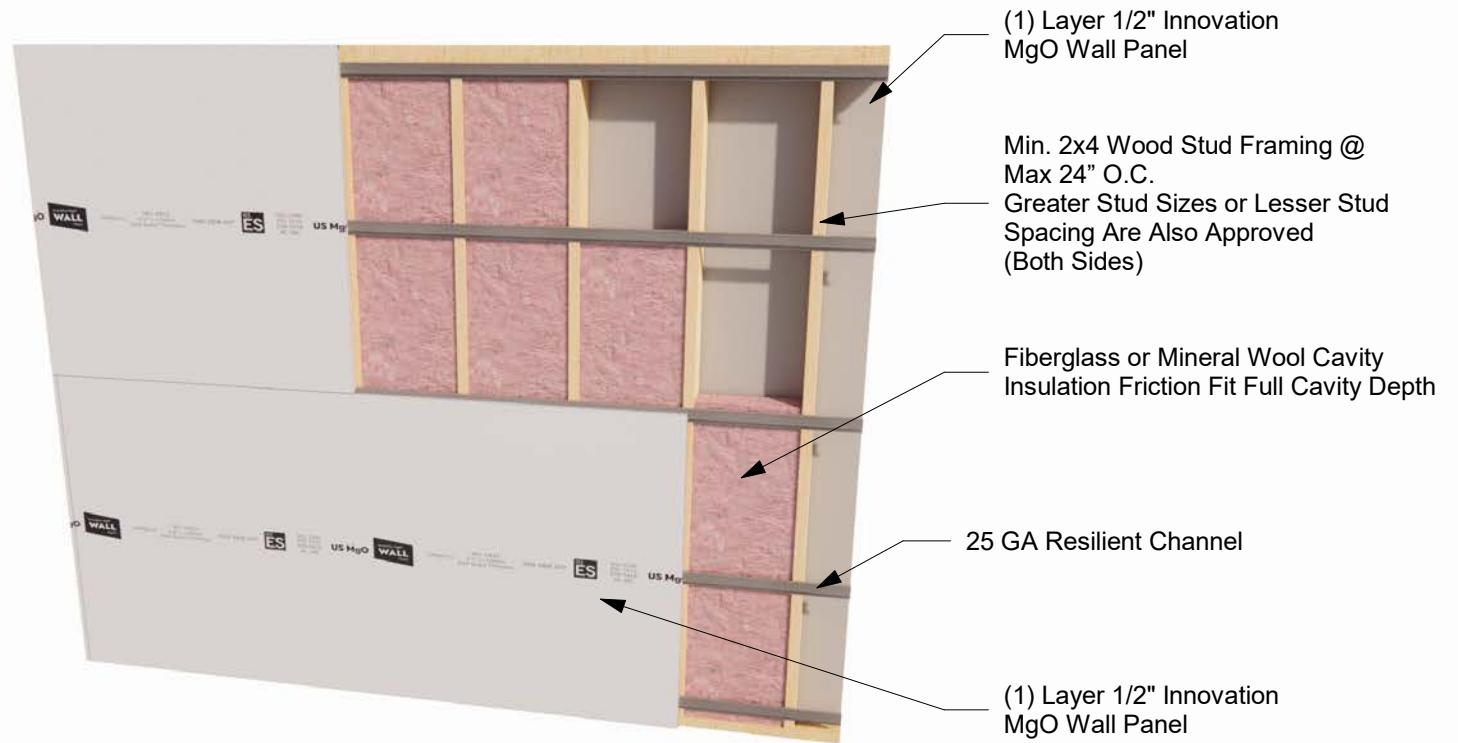
[www.usmgo.co](http://www.usmgo.co)

### Innovation MgO 1/2" Wall Panel

1 HR CFS Wall Assembly w/ RC1

Design Number: MOS-1610-TBD

Fire Rating: 1 HR



1-Hour Symmetrical Wall from Either Side  
100% Load Bearing Wood Framed  
Design Number: MOS 1610-TBD

Uses: Demising Walls, Shaft Walls, Load Bearing Exterior or Interior Walls

Should these be used for rated assemblies contact US MgO technical support or review the fire rated handbook provided by US MgO



[www.usmgo.co](http://www.usmgo.co)

### Innovation MgO 1/2" Wall Panel

1 HR Symmetrical Wood Stud Wall Assembly w/ RC1

Design Number: MOS-1610-TBD

Fire Rating: 1 HR